

A 户型

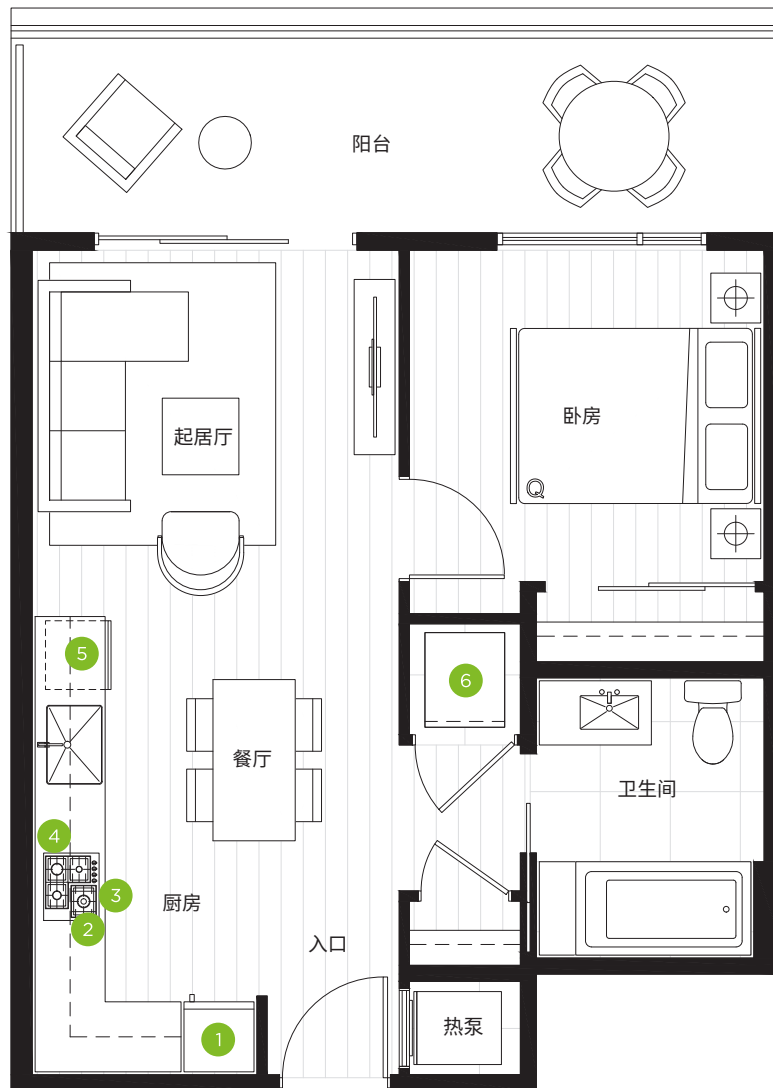
1房 + 1卫

— RENT —
RIVA
RESIDENCES

总面积
620 平方英尺

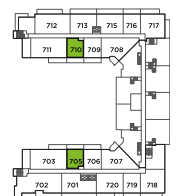
室内
505 平方英尺

户外
115 平方英尺



平面图说明

1. 24" 嵌入式冰箱
2. 24" 4头燃气炉灶
3. 24" 对流式入墙烤箱
4. 24" 微波炉抽油烟机
5. 24" 嵌入式洗碗机
6. 全尺寸洗衣机及烘干机



第七层



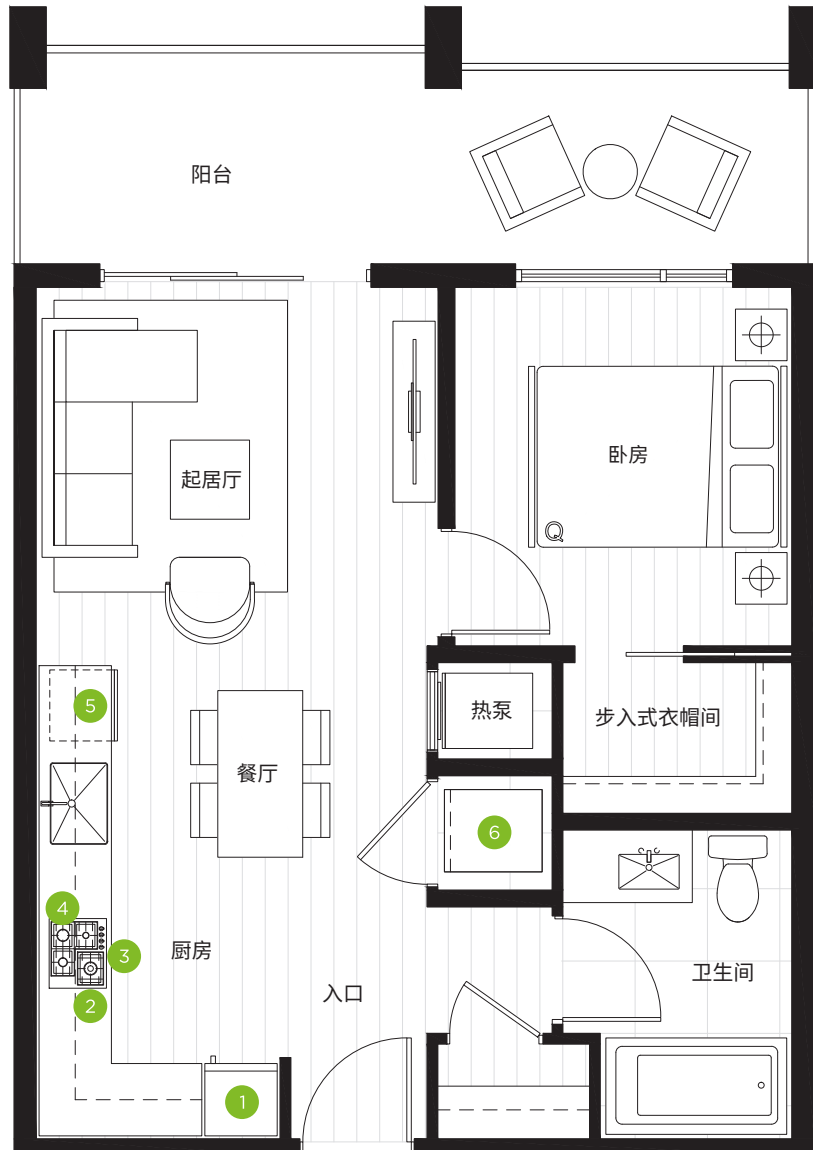
The developer reserves the right to make minor modifications to suite and furniture layout, specifications and floor plans should they be necessary to maintain the high standards of this community. Square footage are based on preliminary measurements and are approximate. E & O.E.

onni
group

A1 户型

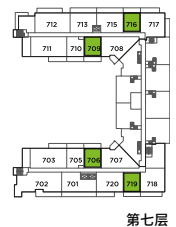
1房 + 1卫

总面积	
640 平方英尺	
室内	户外
530 平方英尺	110 平方英尺



平面图说明

1. 24" 嵌入式冰箱
2. 24" 4头燃气炉灶
3. 24" 对流式入墙烤箱
4. 24" 微波炉抽油烟机
5. 24" 嵌入式洗碗机
6. 全尺寸洗衣机及烘干机



第七层



第六层

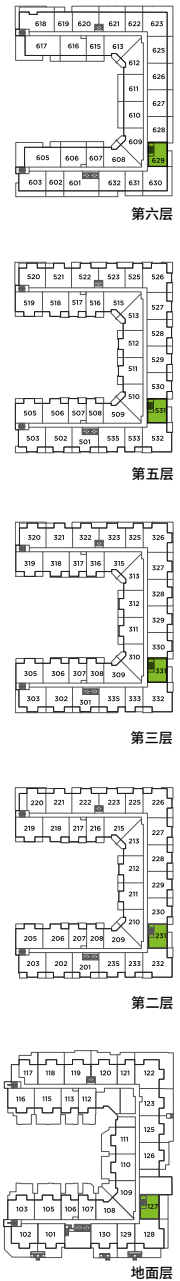


The developer reserves the right to make minor modifications to suite and furniture layout, specifications and floor plans should they be necessary to maintain the high standards of this community. Square footage are based on preliminary measurements and are approximate. E & O.E.

A2 户型

1房 + 1卫

总面积	
655-855 平方英尺	
室内	户外
565 平方英尺	90-290 平方英尺



平面图说明

- 1. 24" 嵌入式冰箱
- 2. 24" 4头燃气炉灶
- 3. 24" 对流式入墙烤箱
- 4. 24" 微波炉抽油烟机
- 5. 24" 嵌入式洗碗机
- 6. 全尺寸洗衣机及烘干机

The developer reserves the right to make minor modifications to suite and furniture layout, specifications and floor plans should they be necessary to maintain the high standards of this community. Square footage are based on preliminary measurements and are approximate. E & O.E.

A3 户型

1房 + 1卫

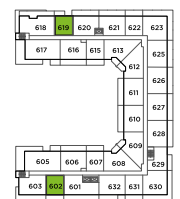
总面积	
610-665 平方英尺	
室内	户外
550 平方英尺	60-115 平方英尺

602 单元的平台延伸



平面图说明

1. 24" 嵌入式冰箱
2. 24" 4头燃气炉灶
3. 24" 对流式入墙烤箱
4. 24" 微波炉抽油烟机
5. 24" 嵌入式洗碗机
6. 全尺寸洗衣机及烘干机



第六层



The developer reserves the right to make minor modifications to suite and furniture layout, specifications and floor plans should they be necessary to maintain the high standards of this community. Square footage are based on preliminary measurements and are approximate. E & O.E.

B 户型

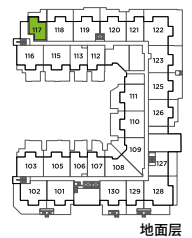
1 房 + 多用途房 + 1 卫

总面积	
780 平方英尺	
室内	户外
590 平方英尺	190 平方英尺



平面图说明

1. 24" 嵌入式冰箱
2. 24" 4 头燃气炉灶
3. 24" 对流式入墙烤箱
4. 24" 微波炉抽油烟机
5. 24" 嵌入式洗碗机
6. 全尺寸洗衣机及烘干机



地面层



B1 户型

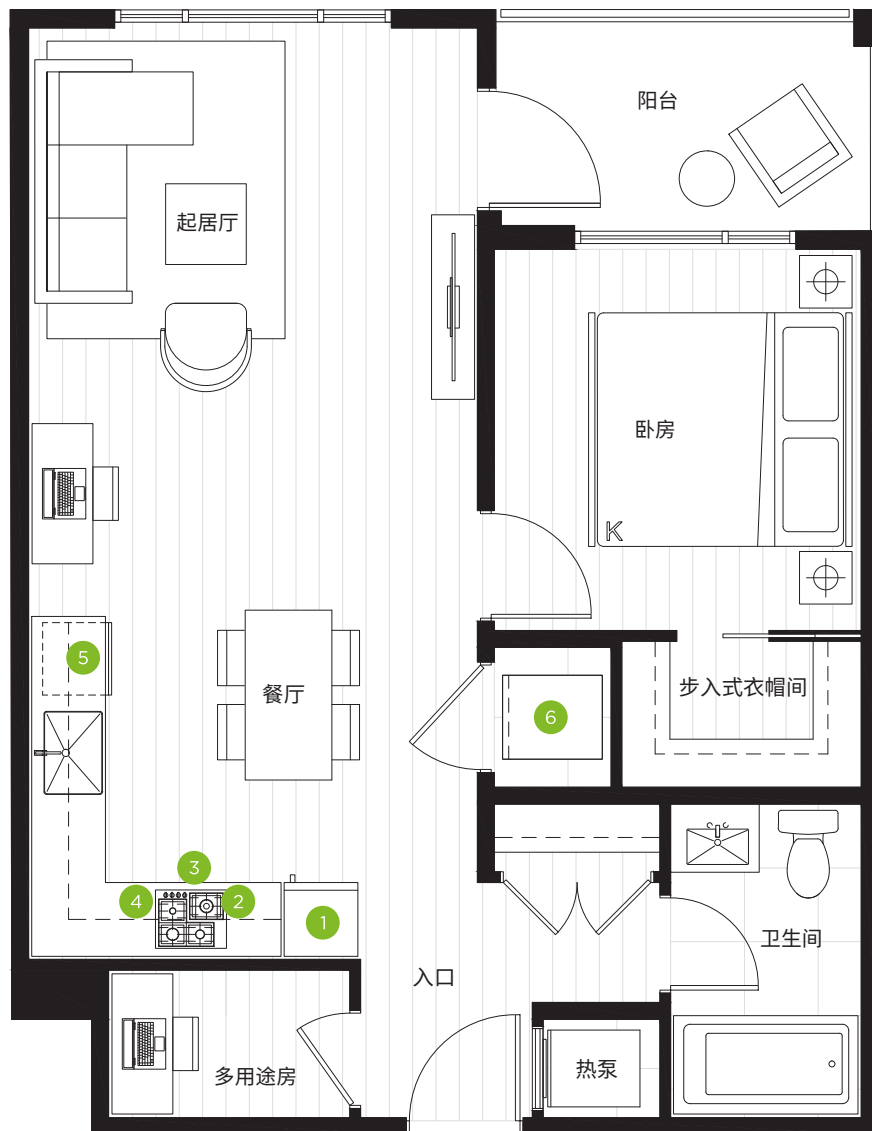
1 房 + 多用途房 + 1 卫

— RENT —
RIVA
RESIDENCES

总面积
700 平方英尺

室内
650 平方英尺

户外
50 平方英尺



平面图说明

1. 24" 嵌入式冰箱
2. 24" 4 头燃气炉灶
3. 24" 对流式入墙烤箱
4. 24" 微波炉抽油烟机
5. 24" 嵌入式洗碗机
6. 全尺寸洗衣机及烘干机



第二层



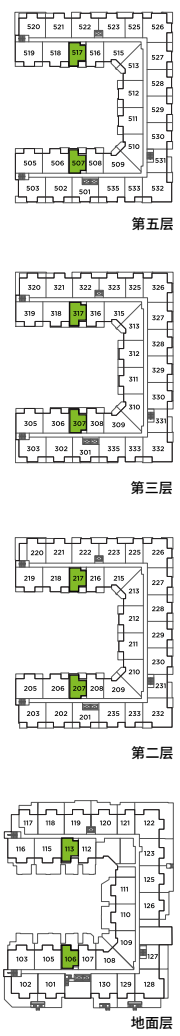
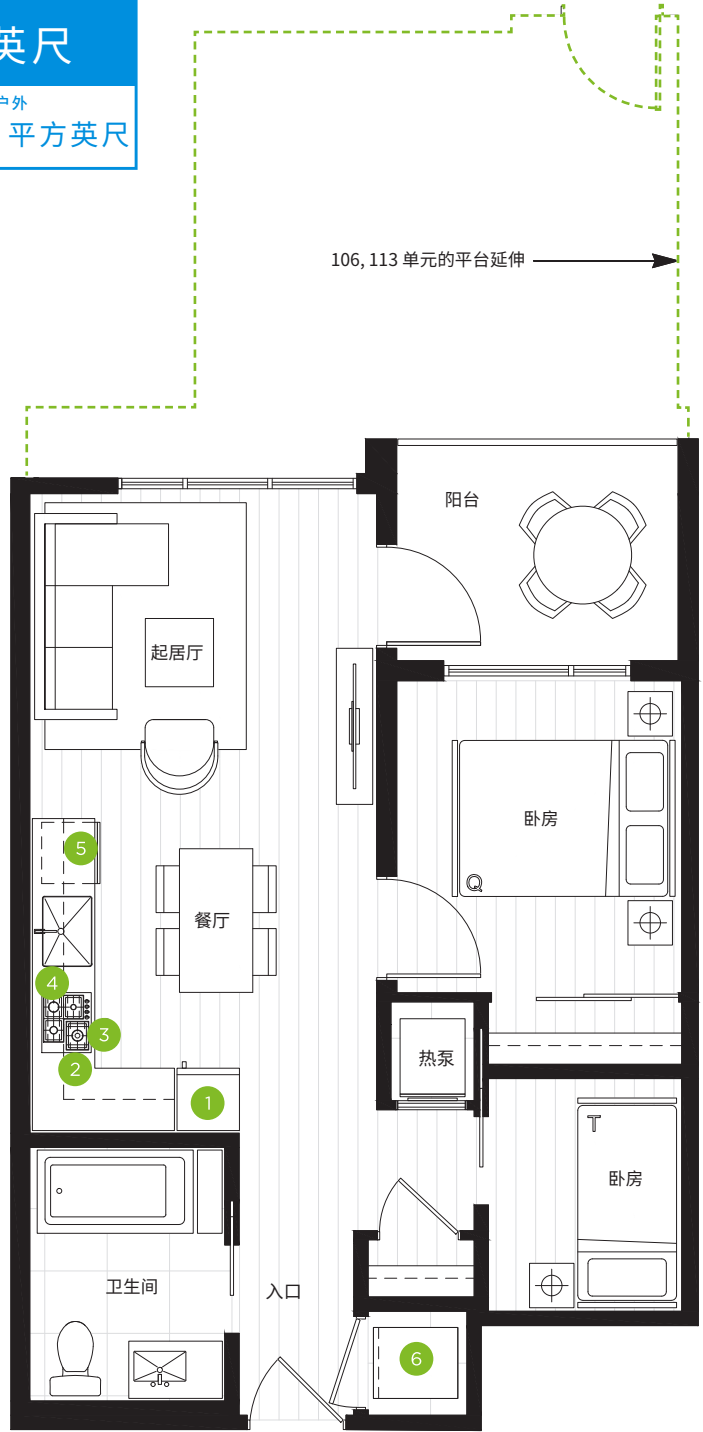
The developer reserves the right to make minor modifications to suite and furniture layout, specifications and floor plans should they be necessary to maintain the high standards of this community. Square footage are based on preliminary measurements and are approximate. E & O.E.

onni
group

C 户型

小2房 + 1 卫

总面积	
635-855 平方英尺	
室内	户外
575 平方英尺	60-280 平方英尺



平面图说明

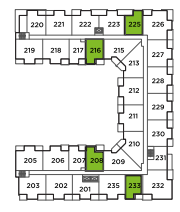
1. 24" 嵌入式冰箱
2. 24" 4头燃气炉灶
3. 24" 对流式入墙烤箱
4. 24" 微波炉抽油烟机
5. 24" 嵌入式洗碗机
6. 全尺寸洗衣机及烘干机

The developer reserves the right to make minor modifications to suite and furniture layout, specifications and floor plans should they be necessary to maintain the high standards of this community. Square footage are based on preliminary measurements and are approximate. E & O.E.

C1 户型

小2房 + 1 卫

总面积	
665-855 平方英尺	
室内 600 平方英尺	户外 65-255 平方英尺



平面图说明

1. 24" 嵌入式冰箱
2. 24" 4头燃气炉灶
3. 24" 对流式入墙烤箱
4. 24" 微波炉抽油烟机
5. 24" 嵌入式洗碗机
6. 全尺寸洗衣机及烘干机

The developer reserves the right to make minor modifications to suite and furniture layout, specifications and floor plans should they be necessary to maintain the high standards of this community. Square footage are based on preliminary measurements and are approximate. E & O.E.

D 户型

2房 + 1 卫

总面积	
830 平方英尺	
室内	户外
700 平方英尺	130 平方英尺



第五层



第三层



第二层

平面图说明

1. 30" 嵌入式冰箱
2. 30" 5头燃气炉灶
3. 30" 对流式入墙烤箱
4. 30" 微波炉抽油烟机
5. 24" 嵌入式洗碗机
6. 全尺寸洗衣机及烘干机

The developer reserves the right to make minor modifications to suite and furniture layout, specifications and floor plans should they be necessary to maintain the high standards of this community. Square footage are based on preliminary measurements and are approximate. E & O.E.



D1 户型

2房 + 2卫

— RENT —
RIVA
RESIDENCES

总面积
920 平方英尺

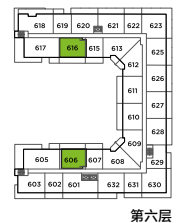
室内
760 平方英尺

户外
160 平方英尺



平面图说明

1. 30" 嵌入式冰箱
2. 30" 5头燃气炉灶
3. 30" 对流式入墙烤箱
4. 30" 微波炉抽油烟机
5. 24" 嵌入式洗碗机
6. 全尺寸洗衣机及烘干机



第六层



The developer reserves the right to make minor modifications to suite and furniture layout, specifications and floor plans should they be necessary to maintain the high standards of this community. Square footage are based on preliminary measurements and are approximate. E & O.E.

onni
group

D2 户型

2房 + 2卫

总面积	
930-940 平方英尺	
室内	户外
770 平方英尺	160-170 平方英尺



第七层



第六层

平面图说明

1. 30" 嵌入式冰箱
2. 30" 5头燃气炉灶
3. 30" 对流式入墙烤箱
4. 30" 微波炉抽油烟机
5. 24" 嵌入式洗碗机
6. 全尺寸洗衣机及烘干机

The developer reserves the right to make minor modifications to suite and furniture layout, specifications and floor plans should they be necessary to maintain the high standards of this community. Square footage are based on preliminary measurements and are approximate. E & O.E.



D3 户型

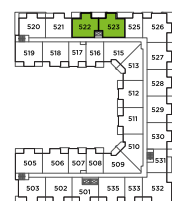
2房 + 2卫

总面积

970-1,275 平方英尺

室内
840 平方英尺

户外
130-435 平方英尺



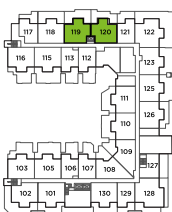
第五层



第三层



第二层



地面层

平面图说明

1. 30" 嵌入式冰箱
2. 30" 5 头燃气炉灶
3. 30" 对流式入墙烤箱
4. 30" 微波炉抽油烟机
5. 24" 嵌入式洗碗机
6. 全尺寸洗衣机及烘干机

The developer reserves the right to make minor modifications to suite and furniture layout, specifications and floor plans should they be necessary to maintain the high standards of this community. Square footage are based on preliminary measurements and are approximate. E & O.E.



D4 户型

2房 + 2卫

— RENT —
RIVA
RESIDENCES

总面积

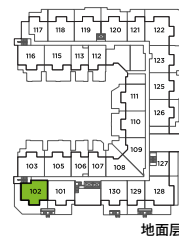
1,520 平方英尺

室内

860 平方英尺

户外

660 平方英尺



平面图说明

1. 30" 嵌入式冰箱
2. 30" 5头燃气炉灶
3. 30" 对流式入墙烤箱
4. 30" 微波炉抽油烟机
5. 24" 嵌入式洗碗机
6. 全尺寸洗衣机及烘干机

The developer reserves the right to make minor modifications to suite and furniture layout, specifications and floor plans should they be necessary to maintain the high standards of this community. Square footage are based on preliminary measurements and are approximate. E & O.E.

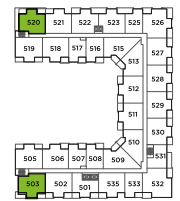
onni
group



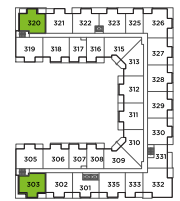
D5 户型

2房 + 2卫

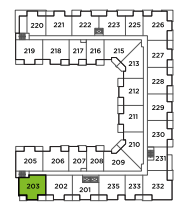
总面积	
960-1,110 平方英尺	
室内	户外
860 平方英尺	100-250 平方英尺



第五层



第三层



第二层

平面图说明

1. 30" 嵌入式冰箱
2. 30" 5头燃气炉灶
3. 30" 对流式入墙烤箱
4. 30" 微波炉抽油烟机
5. 24" 嵌入式洗碗机
6. 全尺寸洗衣机及烘干机

The developer reserves the right to make minor modifications to suite and furniture layout, specifications and floor plans should they be necessary to maintain the high standards of this community. Square footage are based on preliminary measurements and are approximate. E & O.E.



D6 户型

2房 + 2卫

总面积

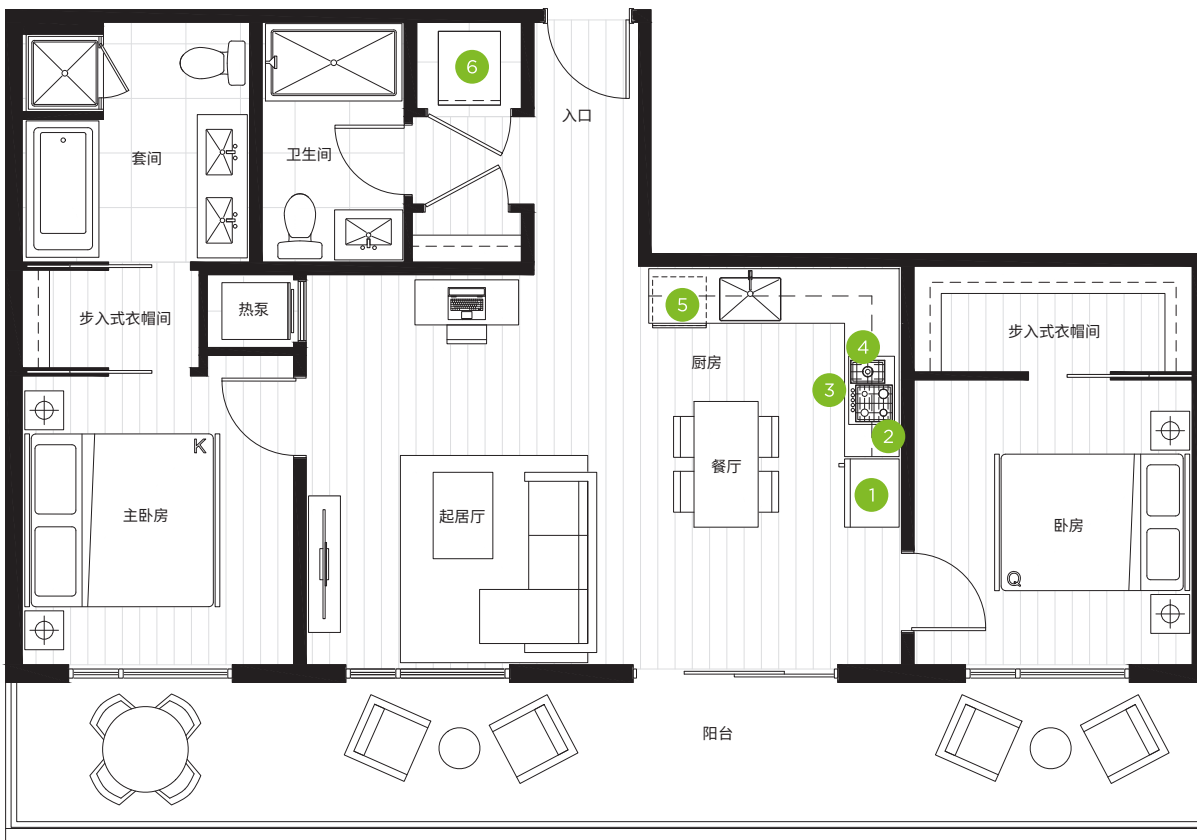
1,080-1,090平方英尺

室内

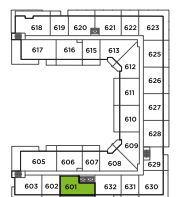
870 平方英尺

户外

210-220 平方英尺



第七层



第六层

平面图说明

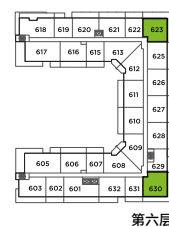
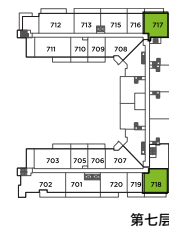
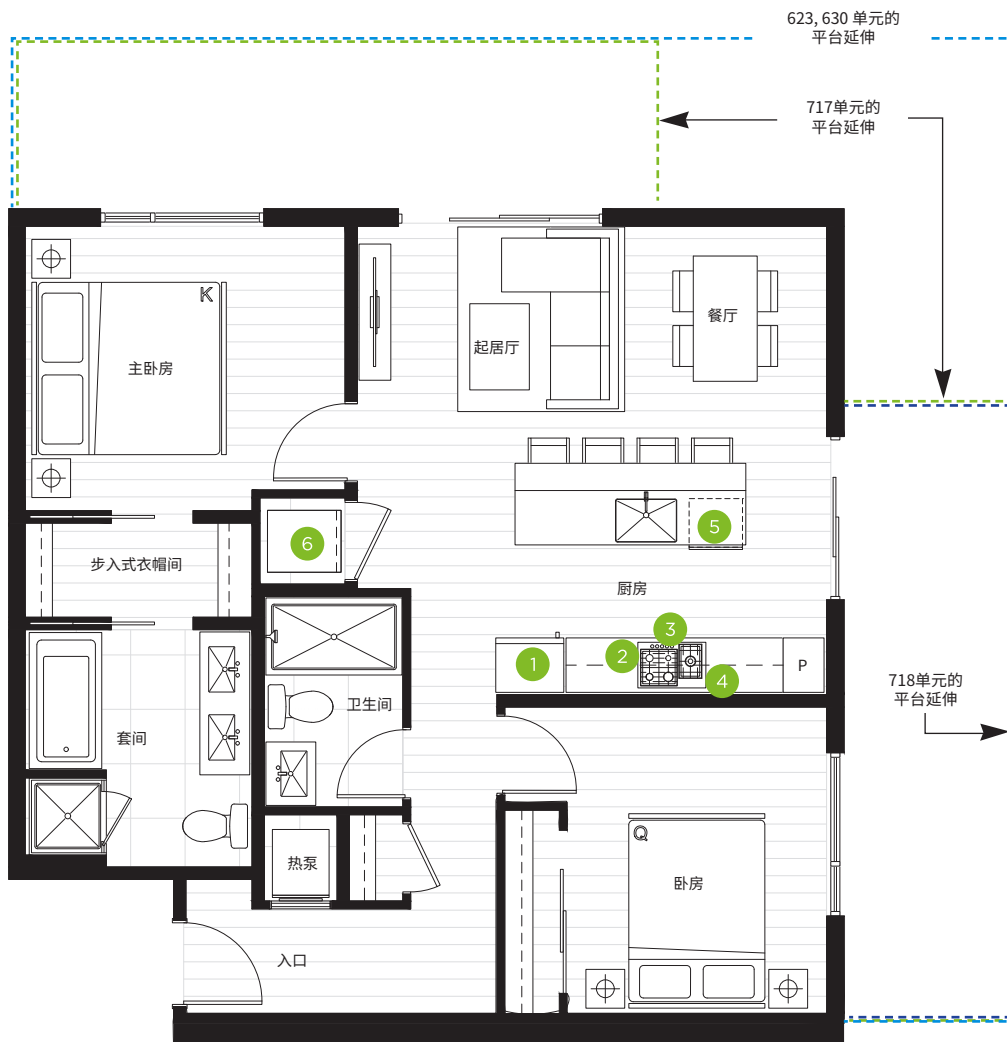
1. 30" 嵌入式冰箱
2. 30" 5头燃气炉灶
3. 30" 对流式入墙烤箱
4. 30" 微波炉抽油烟机
5. 24" 嵌入式洗碗机
6. 全尺寸洗衣机及烘干机

The developer reserves the right to make minor modifications to suite and furniture layout, specifications and floor plans should they be necessary to maintain the high standards of this community. Square footage are based on preliminary measurements and are approximate. E & O.E.

D7 户型

2房 + 2卫

总面积	
1,015-1,200 平方英尺	
室内	户外
875 平方英尺	140-325 平方英尺



平面图说明

1. 30" 嵌入式冰箱
2. 30" 5头燃气炉灶
3. 30" 对流式入墙烤箱
4. 30" 微波炉抽油烟机
5. 24" 嵌入式洗碗机
6. 全尺寸洗衣机及烘干机

The developer reserves the right to make minor modifications to suite and furniture layout, specifications and floor plans should they be necessary to maintain the high standards of this community. Square footage are based on preliminary measurements and are approximate. E & O.E.



D8 户型

2房 + 2卫

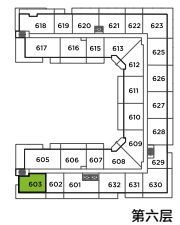
总面积
950 平方英尺

室内 750 平方英尺	户外 200 平方英尺
----------------	----------------



平面图说明

1. 30" 嵌入式冰箱
2. 30" 5头燃气炉灶
3. 30" 对流式入墙烤箱
4. 30" 微波炉抽油烟机
5. 24" 嵌入式洗碗机
6. 全尺寸洗衣机及烘干机



E 户型

2 房 + 多用途房 + 2 卫

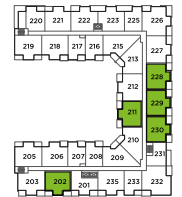
总面积	
1,020-1,430 平方英尺	
室内	户外
890 平方英尺	130-540 平方英尺



第五层



第三层



第二层



地面层

平面图说明

1. 30" 嵌入式冰箱
2. 30" 5 头燃气炉灶
3. 30" 对流式入墙烤箱
4. 30" 微波炉抽油烟机
5. 24" 嵌入式洗碗机
6. 全尺寸洗衣机及烘干机

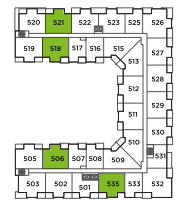
The developer reserves the right to make minor modifications to suite and furniture layout, specifications and floor plans should they be necessary to maintain the high standards of this community. Square footage are based on preliminary measurements and are approximate. E & O.E.



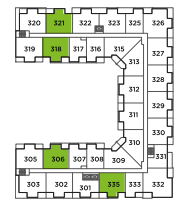
E1 户型

2 房 + 多用途房 + 2 卫

总面积	
955 平方英尺	
室内	户外
890 平方英尺	65 平方英尺



第五层



第三层



第二层

平面图说明

1. 30" 嵌入式冰箱
2. 30" 5 头燃气炉灶
3. 30" 对流式入墙烤箱
4. 30" 微波炉抽油烟机
5. 24" 嵌入式洗碗机
6. 全尺寸洗衣机及烘干机

The developer reserves the right to make minor modifications to suite and furniture layout, specifications and floor plans should they be necessary to maintain the high standards of this community. Square footage are based on preliminary measurements and are approximate. E & O.E.



E2 户型

2 房 + 多用途房 + 2 卫

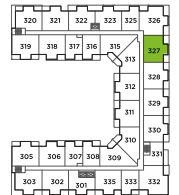
总面积	
1,005-1,350 平方英尺	
室内	户外
870 平方英尺	135-480 平方英尺



123单元的平台延伸



第五层



第三层



第二层



地面层

平面图说明

1. 30" 嵌入式冰箱
2. 30" 5头燃气炉灶
3. 30" 对流式入墙烤箱
4. 30" 微波炉抽油烟机
5. 24" 嵌入式洗碗机
6. 全尺寸洗衣机及烘干机

The developer reserves the right to make minor modifications to suite and furniture layout, specifications and floor plans should they be necessary to maintain the high standards of this community. Square footage are based on preliminary measurements and are approximate. E & O.E.



E3 户型

2 房 + 多用途房 + 2 卫

总面积

1,015-1,290 平方英尺

室内

880 平方英尺

户外

135-410 平方英尺



第五层



第三层



第二层



地面层

平面图说明

1. 30" 嵌入式冰箱
2. 30" 5 头燃气炉灶
3. 30" 对流式入墙烤箱
4. 30" 微波炉抽油烟机
5. 24" 嵌入式洗碗机
6. 全尺寸洗衣机及烘干机

The developer reserves the right to make minor modifications to suite and furniture layout, specifications and floor plans should they be necessary to maintain the high standards of this community. Square footage are based on preliminary measurements and are approximate. E & O.E.



E4 户型

2 房 + 多用途房 + 2 卫

总面积	
995-1,285 平方英尺	
室内	户外
895 平方英尺	100-390 平方英尺



平面图说明

1. 30" 嵌入式冰箱
2. 30" 5 头燃气炉灶
3. 30" 对流式入墙烤箱
4. 30" 微波炉抽油烟机
5. 24" 嵌入式洗碗机
6. 全尺寸洗衣机及烘干机

The developer reserves the right to make minor modifications to suite and furniture layout, specifications and floor plans should they be necessary to maintain the high standards of this community. Square footage are based on preliminary measurements and are approximate. E & O.E.

E5 户型

2 房 + 多用途房 + 2 卫

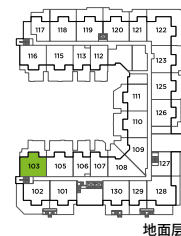
— RENT —
RIVA
RESIDENCES

总面积	
1,335 平方英尺	
室内	户外
895 平方英尺	440 平方英尺



平面图说明

1. 30" 嵌入式冰箱
2. 30" 5 头燃气炉灶
3. 30" 对流式入墙烤箱
4. 30" 微波炉抽油烟机
5. 24" 嵌入式洗碗机
6. 全尺寸洗衣机及烘干机



The developer reserves the right to make minor modifications to suite and furniture layout, specifications and floor plans should they be necessary to maintain the high standards of this community. Square footage are based on preliminary measurements and are approximate. E & O.E.

onni
group

E6 户型

2 房 + 多用途房 + 2 卫

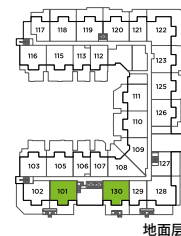
— RENT —
RIVA
 RESIDENCES

总面积	
1,250-1,260 平方英尺	
室内	户外
890 平方英尺	360-370 平方英尺



平面图说明

1. 30" 嵌入式冰箱
2. 30" 5 头燃气炉灶
3. 30" 对流式入墙烤箱
4. 30" 微波炉抽油烟机
5. 24" 嵌入式洗碗机
6. 全尺寸洗衣机及烘干机



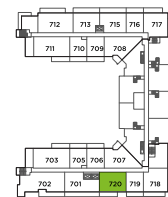
The developer reserves the right to make minor modifications to suite and furniture layout, specifications and floor plans should they be necessary to maintain the high standards of this community. Square footage are based on preliminary measurements and are approximate. E & O.E.

onni
group

E7 户型

2 房 + 多用途房 + 2 卫

总面积	
925 平方英尺	
室内	户外
815 平方英尺	110 平方英尺



第七层



第六层

平面图说明

1. 30" 嵌入式冰箱
2. 30" 5 头燃气炉灶
3. 30" 对流式入墙烤箱
4. 30" 微波炉抽油烟机
5. 24" 嵌入式洗碗机
6. 全尺寸洗衣机及烘干机

The developer reserves the right to make minor modifications to suite and furniture layout, specifications and floor plans should they be necessary to maintain the high standards of this community. Square footage are based on preliminary measurements and are approximate. E & O.E.



E8 户型

2 房 + 书房 + 2 卫

总面积

930-1,095 平方英尺

室内

870 平方英尺

户外

60-225 平方英尺



109 单元的平台延伸



第五层



第三层



第二层



地面层

平面图说明

1. 30" 嵌入式冰箱
2. 30" 5 头燃气炉灶
3. 30" 对流式入墙烤箱
4. 30" 微波炉抽油烟机
5. 24" 嵌入式洗碗机
6. 全尺寸洗衣机及烘干机

The developer reserves the right to make minor modifications to suite and furniture layout, specifications and floor plans should they be necessary to maintain the high standards of this community. Square footage are based on preliminary measurements and are approximate. E & O.E.

RENT
RIVA
RESIDENCES

onni
group



E9 户型

2 房 + 书房 + 2 卫

总面积

935-1,100 平方英尺

室内

875 平方英尺

户外

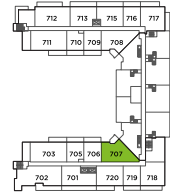
60-225 平方英尺



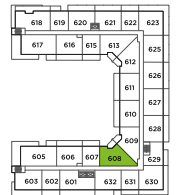
平面图说明

1. 30" 嵌入式冰箱
2. 30" 5 头燃气炉灶
3. 30" 对流式入墙烤箱
4. 30" 微波炉抽油烟机
5. 24" 嵌入式洗碗机
6. 全尺寸洗衣机及烘干机

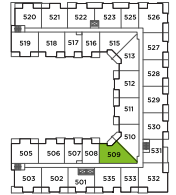
RENT
RIVA
RESIDENCES



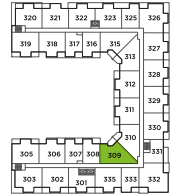
第七层



第六层



第五层



第三层



第二层



地面层



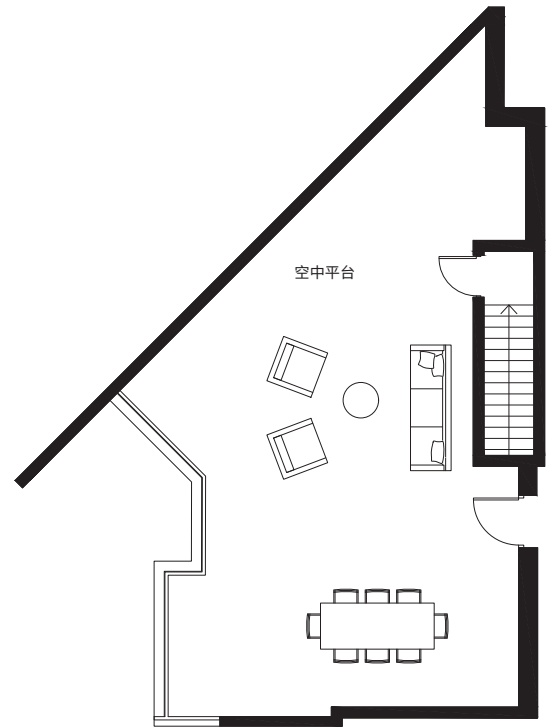
The developer reserves the right to make minor modifications to suite and furniture layout, specifications and floor plans should they be necessary to maintain the high standards of this community. Square footage are based on preliminary measurements and are approximate. E & O.E.

onni
group

F 户型

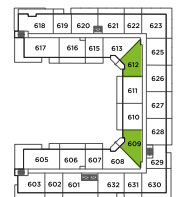
2 房 + 书房 + 2 卫 + 空中平台

总面积	
1,630 平方英尺	
室内	户外
870 平方英尺	760 平方英尺



平面图说明

1. 30" 嵌入式冰箱
2. 30" 5 头燃气炉灶
3. 30" 对流式入墙烤箱
4. 30" 微波炉抽油烟机
5. 24" 嵌入式洗碗机
6. 全尺寸洗衣机及烘干机



第六层

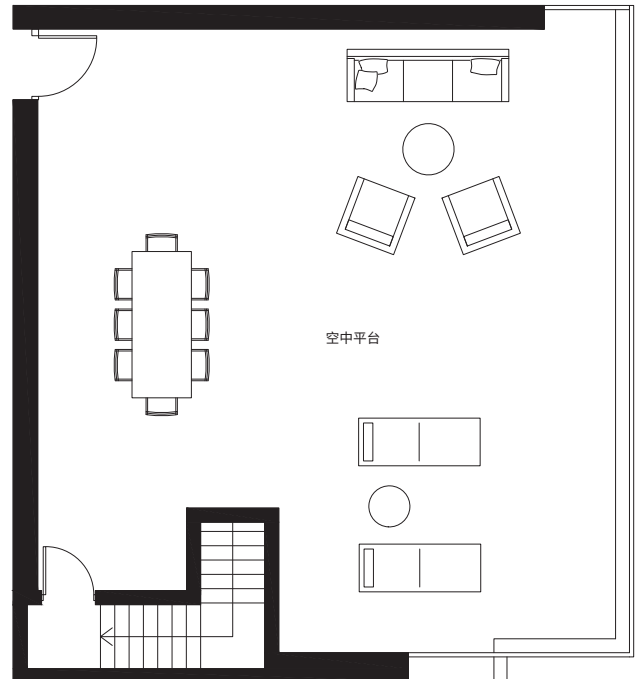


The developer reserves the right to make minor modifications to suite and furniture layout, specifications and floor plans should they be necessary to maintain the high standards of this community. Square footage are based on preliminary measurements and are approximate. E & O.E.

F1 户型

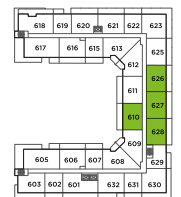
2房 + 2卫 + 空中平台

总面积	
1,705-1,785 平方英尺	
室内	户外
810 平方英尺	895-975 平方英尺



平面图说明

1. 30" 嵌入式冰箱
2. 30" 5头燃气炉灶
3. 30" 对流式入墙烤箱
4. 30" 微波炉抽油烟机
5. 24" 嵌入式洗碗机
6. 全尺寸洗衣机及烘干机



第六层



The developer reserves the right to make minor modifications to suite and furniture layout, specifications and floor plans should they be necessary to maintain the high standards of this community. Square footage are based on preliminary measurements and are approximate. E & O.E.

F2 户型

2房 + 2卫 + 空中平台

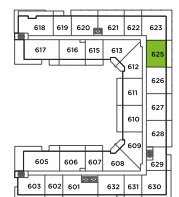
总面积
1,700 平方英尺

室内 790 平方英尺	户外 910 平方英尺
----------------	----------------



平面图说明

1. 30" 嵌入式冰箱
2. 30" 5头燃气炉灶
3. 30" 对流式入墙烤箱
4. 30" 微波炉抽油烟机
5. 24" 嵌入式洗碗机
6. 全尺寸洗衣机及烘干机



第六层

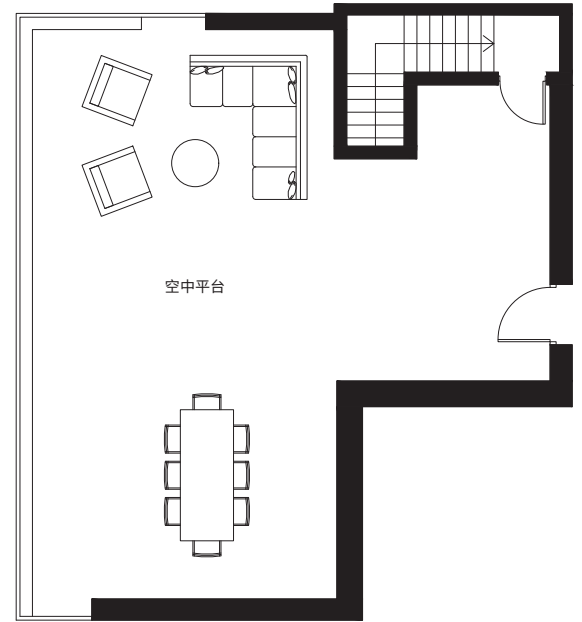


The developer reserves the right to make minor modifications to suite and furniture layout, specifications and floor plans should they be necessary to maintain the high standards of this community. Square footage are based on preliminary measurements and are approximate. E & O.E.

F3 户型

2房 + 2卫 + 空中平台

总面积	
1,665 平方英尺	
室内	户外
800 平方英尺	865 平方英尺



平面图说明

1. 30" 嵌入式冰箱
2. 30" 5 头燃气炉灶
3. 30" 对流式入墙烤箱
4. 30" 微波炉抽油烟机
5. 24" 嵌入式洗碗机
6. 全尺寸洗衣机及烘干机



第六层



The developer reserves the right to make minor modifications to suite and furniture layout, specifications and floor plans should they be necessary to maintain the high standards of this community. Square footage are based on preliminary measurements and are approximate. E & O.E.

G 户型

3 房 + 2 卫

总面积	
1,240 平方英尺	
室内	户外
1,010 平方英尺	230 平方英尺



平面图说明

1. 30" 嵌入式冰箱
2. 30" 5 头燃气炉灶
3. 30" 对流式入墙烤箱
4. 30" 微波炉抽油烟机
5. 24" 嵌入式洗碗机
6. 全尺寸洗衣机及烘干机



第六层



The developer reserves the right to make minor modifications to suite and furniture layout, specifications and floor plans should they be necessary to maintain the high standards of this community. Square footage are based on preliminary measurements and are approximate. E & O.E.

G1 户型

3 房 + 2 卫

总面积

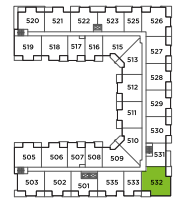
1,280-1,700 平方英尺

室内

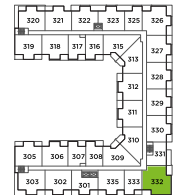
1,130 平方英尺

户外

150-570 平方英尺



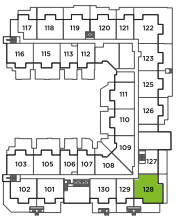
第五层



第三层



第二层



地面层

平面图说明

1. 30" 嵌入式冰箱
2. 30" 5 头燃气炉灶
3. 30" 对流式入墙烤箱
4. 30" 微波炉抽油烟机
5. 24" 嵌入式洗碗机
6. 全尺寸洗衣机及烘干机

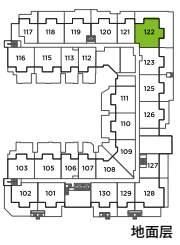
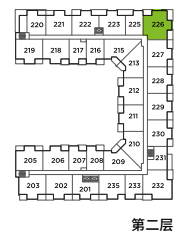
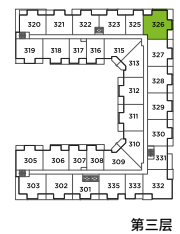
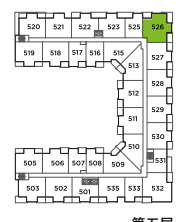
The developer reserves the right to make minor modifications to suite and furniture layout, specifications and floor plans should they be necessary to maintain the high standards of this community. Square footage are based on preliminary measurements and are approximate. E & O.E.



G2 户型

3 房 + 2 卫

总面积	
1,300-2,085 平方英尺	
室内	户外
1,060 平方英尺	240-1,025 平方英尺



平面图说明

1. 30" 嵌入式冰箱
2. 30" 5 头燃气炉灶
3. 30" 对流式入墙烤箱
4. 30" 微波炉抽油烟机
5. 24" 嵌入式洗碗机
6. 全尺寸洗衣机及烘干机

The developer reserves the right to make minor modifications to suite and furniture layout, specifications and floor plans should they be necessary to maintain the high standards of this community. Square footage are based on preliminary measurements and are approximate. E & O.E.

G3 户型

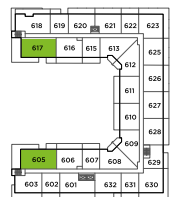
3 房 + 2 卫

总面积	
1,565 平方英尺	
室内	户外
1,095 平方英尺	470 平方英尺



平面图说明

1. 30" 嵌入式冰箱
2. 30" 5头燃气炉灶
3. 30" 对流式入墙烤箱
4. 30" 微波炉抽油烟机
5. 24" 嵌入式洗碗机
6. 全尺寸洗衣机及烘干机



第六层



The developer reserves the right to make minor modifications to suite and furniture layout, specifications and floor plans should they be necessary to maintain the high standards of this community. Square footage are based on preliminary measurements and are approximate. E & O.E.

G4 户型

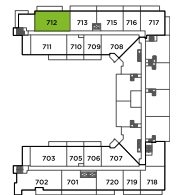
3 房 + 2 卫

总面积	
1,600 平方英尺	
室内	户外
1,070 平方英尺	530 平方英尺



平面图说明

1. 30" 嵌入式冰箱
2. 30" 5 头燃气炉灶
3. 30" 对流式入墙烤箱
4. 30" 微波炉抽油烟机
5. 24" 嵌入式洗碗机
6. 全尺寸洗衣机及烘干机



第七层



The developer reserves the right to make minor modifications to suite and furniture layout, specifications and floor plans should they be necessary to maintain the high standards of this community. Square footage are based on preliminary measurements and are approximate. E & O.E.

G5 户型

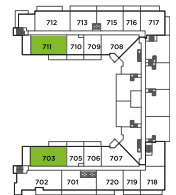
3 房 + 2 卫

总面积	
1,425 平方英尺	
室内	户外
1,100 平方英尺	325 平方英尺



平面图说明

1. 30" 嵌入式冰箱
2. 30" 5 头燃气炉灶
3. 30" 对流式入墙烤箱
4. 30" 微波炉抽油烟机
5. 24" 嵌入式洗碗机
6. 全尺寸洗衣机及烘干机



第七层

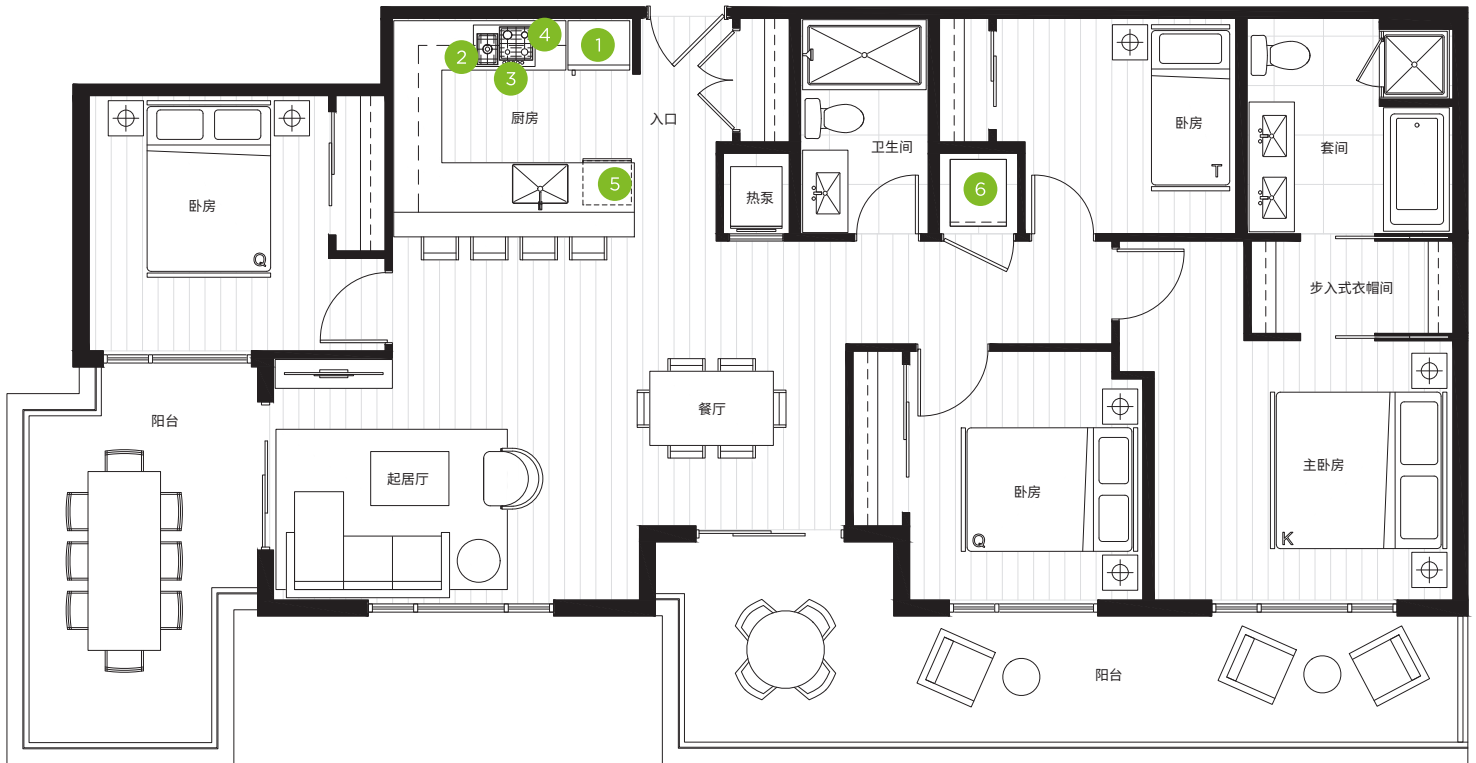


The developer reserves the right to make minor modifications to suite and furniture layout, specifications and floor plans should they be necessary to maintain the high standards of this community. Square footage are based on preliminary measurements and are approximate. E & O.E.

H 户型

小 4 房 + 2 卫

总面积	
1,560 平方英尺	
室内	户外
1,230 平方英尺	330 平方英尺



平面图说明

1. 30" 嵌入式冰箱
2. 30" 5 头燃气炉灶
3. 30" 对流式入墙烤箱
4. 30" 微波炉抽油烟机
5. 24" 嵌入式洗碗机
6. 全尺寸洗衣机及烘干机



第七层



The developer reserves the right to make minor modifications to suite and furniture layout, specifications and floor plans should they be necessary to maintain the high standards of this community. Square footage are based on preliminary measurements and are approximate. E & O.E.